



WFPS – Office of Emergency Management

Welcome

Command Quest

"The Journey to Tactical Learning"



Where did Command Quest come from?

- **Command Quest: The High Stakes Interactive Learning Emergency Management Game**
- 2015, 2017, Dryden, Nova Scotia – Laura King, Internally City of Winnipeg.
- An interactive tabletop exercise game that will immerse you into the real world of Disaster and Emergency Management. Utilizing Incident Command (ICS) 100 & 200 training, you will be challenged as critical thinkers and leaders.
- Three separate 30-person teams will be balanced to maximize effectiveness. Learners will role-play in a variety of settings, including on-site operations, Emergency Operation Centre, Media Relations, Logistics & Planning. Will you and your team manage to mitigate the incident and save lives, or will time run out on your plan to save the day?

What was the genesis?





Risk Perception

Your altered or perceived level of risk due to a multitude of factors like:

- Inability to understand (education)
- Social inputs, stereotypes and urban legends (spiders & snakes)
- Simple math – your experiences have formed a barrier to understand. You have been statistically lucky!



What did I want in an exercise?

- Needed it to be tactical
- I wanted to test multiple things (too many gaps)
- Desire to create stress
- Too many exercises where I went through the motions
- Guinea pig experiment on other people – managed my risk!
- Not afraid to fail.



Where failure is GOOD! **TIP#1 FAIL**

- **F - Feel.** It's okay to hurt and feel it for a short time. Emotions are fuel - GOOD! No ego!
- **A - Account.** Take stock and dissect the process.
- **I - Information.** Research, learn & grow.
- **L - Laser.** Laser focus on the goal – Plan the flight – Fly the plan.



What is your plan? **TIP #2 Passion**

- Don't exercise "just" because.
- Zero engagement when your goal is to pass for the purposes of legislation. What do you need? Leverage a relationship?
- Link your exercise to the elephant in the room. What is your bad thing ? Expose it.



What was the plan?

- I had to assess if I could bring strangers into a room and get them organized enough to work as a team. **Test leadership**
- I wanted to work inside the ICS system **Test systems**
- I needed to see how we communicated internally and externally **Test Crisis Communications**

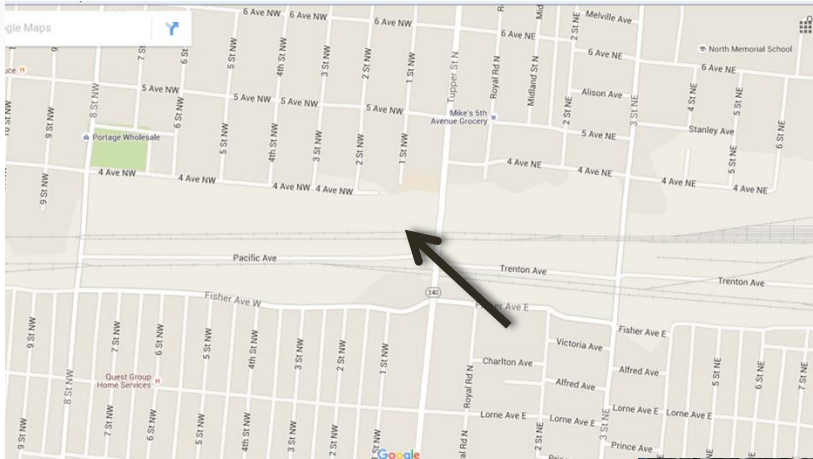


Clover City - TIP #3 **Make it Real**

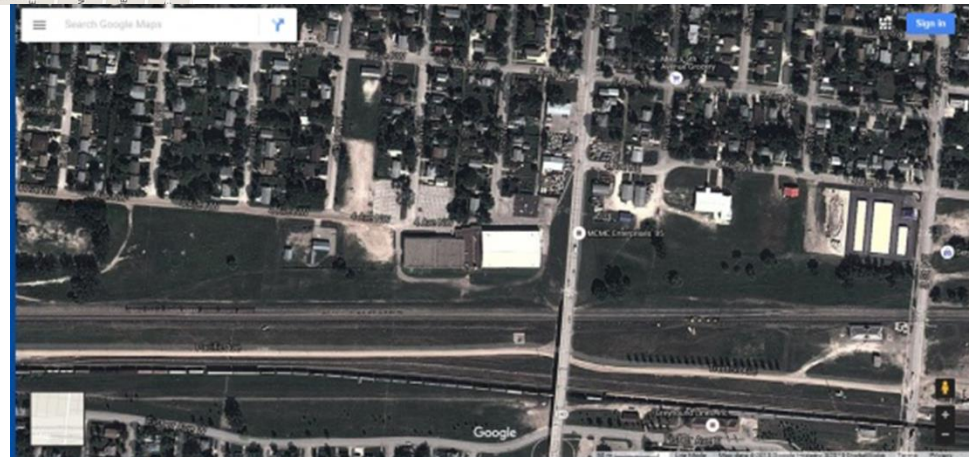
Clover City (CC) has a population of 4000 citizens. The main economic drivers are agriculture, transportation, and manufacturing. The city's motto is "Visit Clover City, the luckiest place on earth!" The phrase was coined from early pioneer days where several businesses found themselves sitting on land that had rich oil reserves. The city also has a major Casino and boasts a popular tourist friendly environment where winning in the town has become as much a part of the culture, as its home town blue collar roots.



Clover City - TIP #3 **Make it Real**



BDO Centre for the Community
390 1 St. NW. Portage La Prairie





Clover City - TIP #3 **Make it Real**



Clover City - TIP #3 **Make it Real**



And then, create chaos.....



- I added the final piece of the puzzle
- Media & Crisis Communications
- Students from Herzing Career College & real local media
- Forced on camera interviews
- Real time responses to twitter



Micro Exercise

- Right now this second!
- Bridge Collapse. Multiple deaths and injuries.
- **What does the second 12- hour operational period look like (post rescue)?**
- 3 Objectives
- 3 Strategies
- 5 mins.

Micro Exercise



Thank you!!!!



- Jay Shaw - jasonshaw@winnipeg.ca